



# TECMO SECRET OF THE STARS™

## A FANTASY

INSTRUCTION BOOKLET



**SUPER NINTENDO**  
ENTERTAINMENT SYSTEM

Thank you for choosing the Tecmo® Secret of the Stars™  
game pak by TECMO, LTD.

**WARNING: PLEASE READ THE ENCLOSED CONSUMER  
INFORMATION AND PRECAUTIONS BOOKLET CAREFULLY BEFORE  
USING YOUR NINTENDO® HARDWARE SYSTEM OR GAME PAK.**

This product has been rated by the Entertainment Software Rating Board. For information about the ESRB rating, or to comment about the appropriateness of the rating, please contact the ESRB at 1-800-771-ESRB.



LICENSED BY



NINTENDO, SUPER NINTENDO  
ENTERTAINMENT SYSTEM  
AND THE OFFICIAL SEALS ARE  
REGISTERED TRADEMARKS OF  
NINTENDO OF AMERICA, INC.  
© 1991 NINTENDO OF AMERICA, INC.

THIS OFFICIAL SEAL IS YOUR  
ASSURANCE THAT NINTENDO HAS  
APPROVED THE QUALITY OF THIS  
PRODUCT. ALWAYS LOOK FOR THIS  
SEAL WHEN BUYING GAMES AND  
ACCESSORIES TO ENSURE  
COMPLETE COMPATIBILITY. ALL  
NINTENDO PRODUCTS ARE  
LICENSED BY SALE FOR USE ONLY  
WITH OTHER AUTHORIZED  
PRODUCTS BEARING THE OFFICIAL  
NINTENDO SEAL OF QUALITY.

# TABLE OF CONTENTS

<b>Map Of The World</b>	4
<b>The Story</b>	5
<b>The Adventurers</b>	6
<b>Controller Operation</b>	7
<b>Beginning Your Game</b>	8
Start adventure	8
Continue adventure	8
Erasing data	8
<b>How To End Your Game</b>	9
How to save	9
Registering your name	9
Set command	9
<b>General Tasks And Commands</b>	10
Talking to others	10
General party condition and command window	10
Magic	10
Item	10
Equip	10
<b>General Tasks And Commands</b>	11
Status window	11
<b>Other Party Options</b>	12
Order	12
Set	12
Swap	12
Barriers	12
<b>Modes Of Travel</b>	13
<b>Battling Enemies</b>	14
<b>Fainting</b>	15
<b>Around Town</b>	16
Item shop	16
Weapon/Armor shop	16
Hospital/Clinic	16
Inn	16
Uncle Save's house	16
Storage	16
<b>Buying And Selling</b>	17
<b>What Is Kustera?</b>	18
<b>Magic</b>	19
Personal magic	19
Unity magic	19
<b>Techniques Of Using Unity Magic</b>	20
Kustera's magic	20
<b>Some Of The Items On Your Way</b>	21-24
<b>Attack Magic</b>	25
<b>Attack Assist Magic</b>	26
<b>Recovery Reincarnate Magic</b>	27
Other magic	27
<b>Combined Attack Magic</b>	28

# MAP OF THE WORLD



- |                     |                            |
|---------------------|----------------------------|
| <b>1.</b> Winds     | <b>13.</b> Sidon Forest    |
| <b>2.</b> Box Town  | <b>14.</b> Bonzley         |
| <b>3.</b> Edon      | <b>15.</b> Ray House       |
| <b>4.</b> Decatas   | <b>16.</b> Likado          |
| <b>5.</b> Donto     | <b>17.</b> Codo            |
| <b>6.</b> Old Hill  | <b>18.</b> Mysterious Cove |
| <b>7.</b> Giant     | <b>19.</b> Lagoon          |
| <b>8.</b> BeeGees   | <b>20.</b> Moreeyes        |
| <b>9.</b> Hidon     | <b>21.</b> Brisben         |
| <b>10.</b> Sleepers | <b>22.</b> Ghost Cave      |
| <b>11.</b> Karappon | <b>23.</b> Brasca          |
| <b>12.</b> Onsaka   |                            |

# THE STORY

With bright skies and bright promise, Heart Island seemed to be a place of never ending happiness. On one fateful day, an evil force changed all that. Suddenly, skies were dark and optimism turned to hopelessness. Yes, the happiness indeed ended...

A young boy, Ray, now struggles to understand the events in his life, past, present, and future. Ray's father suffered at the hands of the evil power that also shattered the tranquility of Heart Island. Thus, he was raised into a world of uncertainty, a world of darkness...

By searching himself, Ray now realizes he must seek more than just answers. He must meet and unite in friendship with other young warriors. Together, these children will establish their own identify. With it, they will have to establish a new world, and a new generation of peace.

Now, without a moment to waste, this magnificent adventure unfolds ...

# THE ADVENTURERS



## RAY

The hero of the adventure was raised without parents by a nurse named Sonia. He believes in and only seeks what is right; yet he always seems to find himself in the wrong place at the wrong time. Being of good nature has brought him many friends.



## TINA

She is a mild mannered person who seems to get along with everyone. A regular goody two shoes you might say. Her non-attack magic spells will provide a great help for protection and recovery. You can meet her in BeeGees Town.



## CODY

This polite, emotional character was captured by Garados, a member of the evil force. Cody can not only yield magic, but he is a strong fighter as well. It is worth it to put up with his moods to have him with you.



## LEONA

Known as the lady leader of a gang of burglars who call themselves "Wild Cats", Leona likes to show off. She has an attitude and a real tom-boy label. Although she is fond of fighting, she hates the sight of blood. You can think of her as a "rebel without a clue or cause".

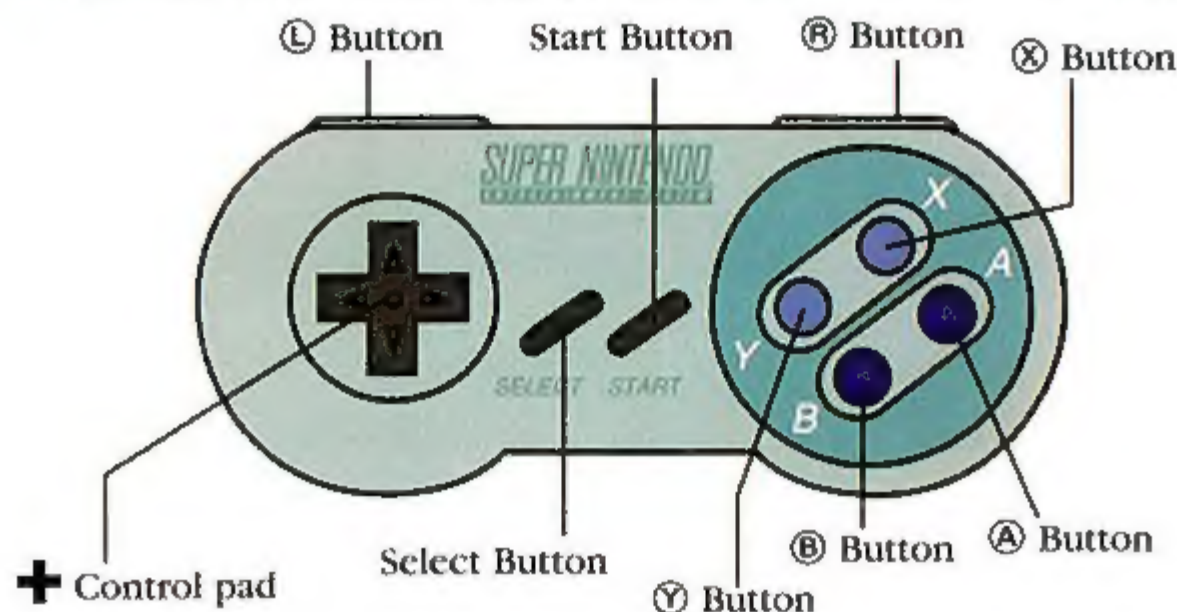


## DAN

Since Dan is very young, he cannot physically fight very well. However, his magic skills are unmatched. Do not be fooled by his wimp appearance.

# CONTROLLER OPERATION

Note: The following are default settings. Custom settings can be done. (See Page 9)



**The Select, ⓧ, Ⓨ, Ⓛ, and Ⓡ buttons are not used.**

The **⊕** Control pad is used for the following:

- moving characters
- moving cursor

**The ⓐ Button or Confirm Button is used for the following:**

- confirming or accepting all commands or tasks
- talking to others
- searching areas or objects (e.g., Treasure Chests)
- operation of vehicles or airplanes
- toggling between the upper and lower continents
- input of letters of name
- scroll text to the next page
- used to erase letters when naming a character

**The ⓑ Button or Cancel Button is used for the following:**

- canceling any command or undoing a task
- to call up the Main Command Window
- to erase letters when naming a character

**The Start Button is used to start the game.**

# BEGINNING YOUR GAME

## How to Start the Game

Insert game pak into your SNES and turn power on. You will get the picture shown here. Pressing Start will allow you to begin an adventure by first registering your name. A total of 3 files can be saved.



- **If data is already saved, you can do the following:**

- **Start Adventure:** This will start your game from the beginning, first asking you to register your name.



- **Continue Adventure:** Move the cursor using the + Control Pad to any of the quests saved and press the (A) Button. You can now continue a saved quest.



- **Erasing Data:** Move the cursor using the + Control Pad to the data file which you wish to erase and press the (A) Button.



**Note: Once erased, data cannot be recovered!**



# HOW TO END YOUR GAME

## How to Save

Visit Uncle Save in a town or village and talk to him to see about saving your Quest. Once saved, you will be asked if you wish to continue.



**Note:** You can save in any of the 3 files and continue from that point later if you wish. A wise adventurer will save often!

## Registering Your Name

Upon reaching this screen, use the **+** Control Pad to choose a letter and the **A** Button to register that letter. You can register up to 6 letters in your name. If you wish to erase a letter, use the **B** Button to do so. When completed, to "End", press **A**.



**Note:** You can select from another page of letters by highlighting the "P" and pressing **A**. You can change and rename any of your characters at anytime during the game, using the Set Command.

## Set Command:

Press the **B** Button to bring up the Main Command Window. Select the Set Command. Next, choose the Rename Command. Finally, choose the person which you wish to rename and press **A**. You will now go back to the Name Input Window.



# GENERAL TASKS AND COMMANDS

- **Talking to Others:**

You will need to collect important clues and information to finish your quest. The best way to do this is speaking to others. You can talk to others by approaching them and pressing the **(A)** Button. To advance text to the next page, should you need to, again Press **(A)**.



- **General Party Condition and Command Window:**

Pressing the **(B)** Button will give you a window similar to this one. Here you will get a look at your party and be able to execute the following commands:



## Magic:

Press the **(A)** Button and select character whose spells you wish to see or use.



## Item:

Press the **(A)** Button to call up the items your party is carrying.



## Equip:

Press the **(A)** Button and select character whose current equipment you wish to check or change.

# GENERAL TASKS AND COMMANDS



MAG	RAY	3.10	PERSON	02
ITEN		0000	02	
SON		MP	81	02
<STAT		MP	00	04
SET		EP	0000	
SNAP		LATER	029	
SKILL		MAGICPOINT		
POWER	00	KNIFE		
DSP	40	LETHAL		
LOCK	00	BERY		
SPEED	00	SHOES		

## Status:

Choosing this option allows you to know your strength and power level status They are as follows:

### “L” Level

The level of experience and ability The higher the better.

### “Star of Actoss”

This is the symbol of a hero who has awakened as a soldier, and only now can begin to use magic spells

Note “Kustera” cannot attain the “Star of Actoss” status

### “Pennon”

After the “Star of Actoss”, heroes can reach the “Pennon” status.

Note Hero status continues from “Pennon” to “Banalette”, and eventually to “Aquatallion”  
Kustera is also a status level name

### “HP”

The number of hit points. This number will increase as you gain levels.

### “MP”

The number of magic points. In order to use spells, you must retain some MP.

### “EP”

The number of experience points. You earn these through defeating enemies in battle. You should try and earn EP at every opportunity. This will help you gain levels quickly.

# OTHER PARTY OPTIONS

**Order:** You can change the order of members in each party. Typically, it is a good idea to put stronger party members first and have the weaker ones last. This tactic will help since enemies attack front party members more frequently.



**Set:** As noted earlier, you can change the name of anyone in your party at any time during the game. To do so, select the Set and Rename options and you will be asked to input a name.



**Swap:** The Swap command lets you switch to control your other traveling party. Going to the Swap command and pressing **A** will start you where your other party last was. The party not being used at the time will pitch a tent to signify that they are resting while you control the other of your two parties.



Note This command can only be used after at least one Kustern person joins you

**Barriers:** If your party encounters a barrier (like the one pictured), you can cross it by simply pressing the **A** Button.



Note There will be some barriers that only one of your two parties can cross. Thus, if you cannot cross a particular barrier, use the Swap command and try crossing the barrier with your other party

# MODES OF TRAVEL

You can enhance your travel through use of the following:



**"The Queen Elza"**  
(A ship for the hero's party only)



**"The King Ocean"**  
(A ship for your non-hero party only)



**"The Final Star Airplane"**  
(A helicopter for the hero's party)

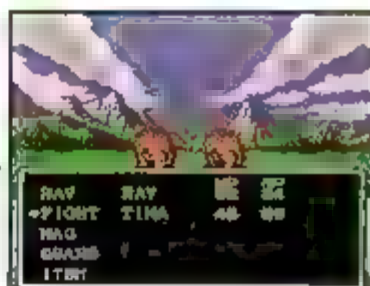


**"The Algos"**  
(Both parties may store their ship or helicopter)

**Note:** You can operate any of the above by approaching and pressing the **A** Button. Control using the **+** control pad. Be sure to get off in a place you and your party can walk

# BATTLING ENEMIES

At various enemies you will find that "Monsters appear", and the scene automatically changes to a battle scene. When this happens you and your party will be drawn into a 3D battle scene. Here, you will have the following menu of options:



Press **(A)** to fight the enemy party. You must select which enemy you wish to attack, and confirm by using the **(A)** Button. Continue for each party member whom you wish to fight in battle. Use the **(B)** Button to cancel any or all undesired previous choices.

**Fight:** To fight using equipped weapons.

**Magic:** To fight using a particular character's magic spells. Also, to recover or aid a party during battle.

**Guard:** This will decrease the attack of an enemy on a particular party member

**Item** This will allow you to use an item that you have during battle

**Auto:** Choosing the Auto command will result in a battle with the enemy until someone is defeated. Party members will automatically fight the enemy party and use only those magic spells or items which will recover ailing ally party members. To cancel the Auto Battle Mode, press **(B)** Button repeatedly

**Run:** If you do not wish to engage in battle with the enemy, you can select this option. Sometimes you cannot run from battle and must fight

**Animate:** You can select the option to have the enemies in battle animate (ON) or remain still (OFF) during battle

**Mes Spd:** You can determine the speed of the dialogue of messages during battle using this feature. They are as follows.

0 = The fastest speed of messages

21 = The slowest speed of messages

∞ = The change in message speed is determined by the player who must press **(A)** to advance message.

# FAINING

## **YOU HAVE FAINTED!!**

If your HP reaches 0, then you will become "Faint" and can no longer fight in a battle. You must be treated in order to change your "Faint" condition.

If you have become "Faint" and your party manages to make it through battle, you will return to the party with 1 HP only. Also, when you are treated for your "Faint" condition in battle, you will return to the active party with 1 HP only.

## **YOUR ENTIRE PARTY HAS FAINTED**

Should all the members in your party "Faint" (reach 0 HP), you will be completely destroyed. Your party will now return to the last town you visited.

You will resume play with all the Experience Points (EP) and Items that you had previous to your last battle. However, you will lose 1/2 (50%) of your accumulated gold.

**Note:** Stop (paralyzed) condition of your entire party in battle will produce a similar result for your party. Remember though, characters may "Faint", but they never give up.

# AROUND TOWN

There are various shops in each town or village which you can buy or sell both items and weapons They include.

## Item Shop:

A place to buy or sell items in your party.

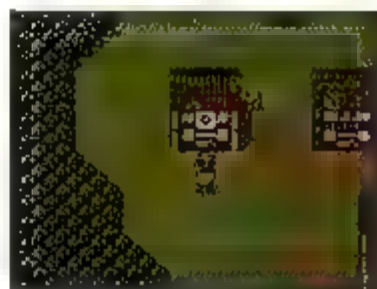


## Weapon/Armor Shop:

A place to buy or sell items (a sword for example) in which you must equip.

## Hospital/Clinic:

Characters who suffer from illness or poison can be treated here.



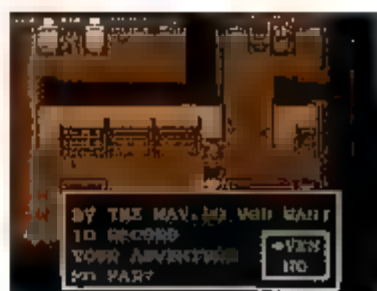
## Inn:

A place to recover lost HP and MP.

Note You may be able to rest at a stranger's house, but you won't recover both HP and MP

## Uncle Save's House:

The place to save your adventure Sometimes, however, Uncle Save may be roaming around town and you may have to look for him.



## Storage:

When you are carrying more items than you wish to, visit and deposit them here for safe keeping



# BUYING AND SELLING

When you enter a place of business (Item, Weapon, Armor Shop), you have the following options:

**Buy:** In the case of items that can be equipped (e.g., Weapons and Armor), characters who can use the particular item you wish to buy will be indicated. Similarly, if a character cannot equip a certain item, the window will indicate such.



**Sell:** When you sell a particular item, you will receive 1/2 (50%) of its original gold price for that item.



**Explain:** When you are not sure what an item is or how it may help you, select the "Explain" option for an item.



# WHAT IS KUSTERA?

The Kustera are a bunch of friends who help you in your adventure. There are eleven Kustera with different abilities. When you enter a town, make sure you speak to everybody, one of Kustera might be hidden.

**Evelyn** - Thief  
**Shark** - Warrior  
**Murry** - Wizard  
**Kathy** - Archer  
**Ryu** - Ninja  
**David** - Warrior

**Andy** - Fighter  
**Ben** - Priest  
**Jubei** - Samurai  
**Beth** - Doctor  
**Arthur** - Witch

## Kustera Registration

Whenever you've met more than five Kustera, you may register them at this place or you may exchange members of Kustera party. Select characters to exchange or register with a cursor and press **A** Button to decide. But you can not add members of Kustera to your main party (Aqutallion).



\* Each party has individual access to money, items and weapons. You cannot share or exchange these with Kustera

# MAGIC

There are two types of Magic Personal Magic and Unity Magic. As you would expect, Personal Magic involves one person and Unity Magic involves more than one person working together. Remember, casting magic spells requires a certain amount of MP each time a spell is cast.

## Personal Magic:

Once attained, a character can cast a spell by using the cursor to select that spell. The spell you wish to use is done by pressing **A** Button provided you have enough MP to cast the spell.



Note Each spell will indicate how many MP necessary to cast in the upper right hand corner of the screen

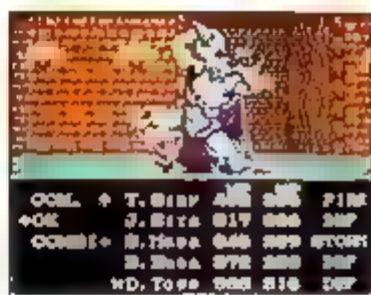
## Unity Magic:

This special magic can be used by 2 (sometimes 4) members of the hero's party (except Dan) only. Also, members in your hero's party must be at least of class "Banalette".

## Using Unity Magic:

When in battle, select the "Magic" and "Unity" options as shown.

When "Unity" option is selected, decide upon 2 members of your party to attack the same enemy. Although you each choose to attack only a single enemy, your Unity Magic will attack the ENTIRE enemy party. The first member you select to unify will be shown with a "star" by their name. The second selected will show a "+" mark. Use the **A** Button to decide "OK". Remember .



Note Should one of your two or four characters "Faint" before the Unity Magic is cast, the spell will fail. Thus, it is a good idea to have your quickest characters unite

# TECHNIQUES OF USING UNITY MAGIC

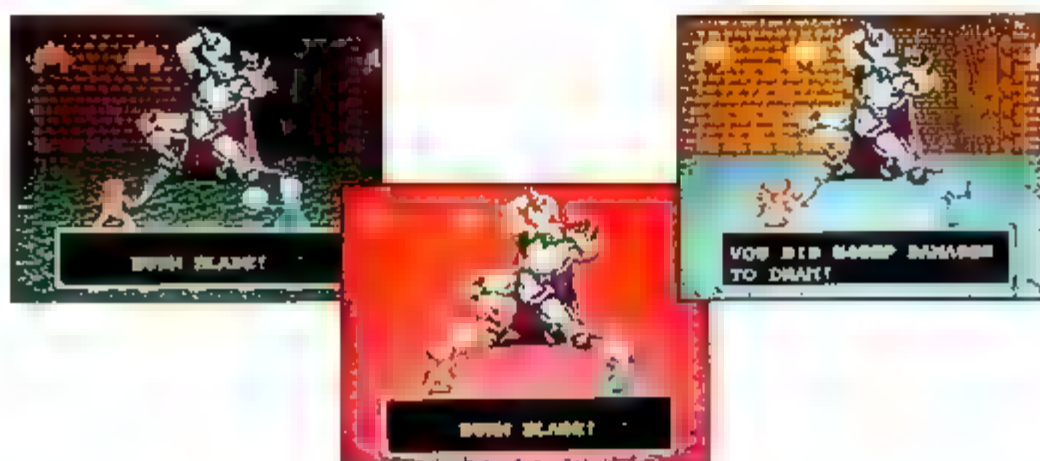
## Techniques of Using Unity Magic

Most importantly, your two party members must aim at the SAME enemy (otherwise Unity Magic will not work) Now, those two allies can unite as follows:

1) "Magic and Magic" - As expected, each member uses magic to attack an enemy

or

2) "Magic and Weapon" - Basic operation of this Unity technique is the same as above. Except, one of the party members selects a weapon from the Items list, and equips with it. Now that character chooses to "Fight" (with his/her weapon). Finally, the other person who is to cast magic, selects a spell. Their Magic/Weapon Unity can result in a "Total Attack".



## Kustera's Magic

The non-hero party also has some magic users. They master spells without relying on the power of Actoss Star. However, their magic is not as strong as the magic of the hero's party.

Note: Kustera learns magic as they gain levels of experience.

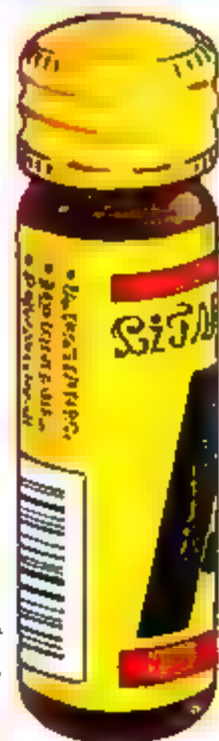
# SOME OF THE ITEMS ON YOUR WAY



## Plum Plum

Made of a special fruit blend  
from the island.

Gives an ally some HP



## Vita Plum A

A nutritious drink made with  
essence of Plum

Gives one all HP back



## Rabbits Tail

Leads you to the  
entrance in a  
Dungeon.

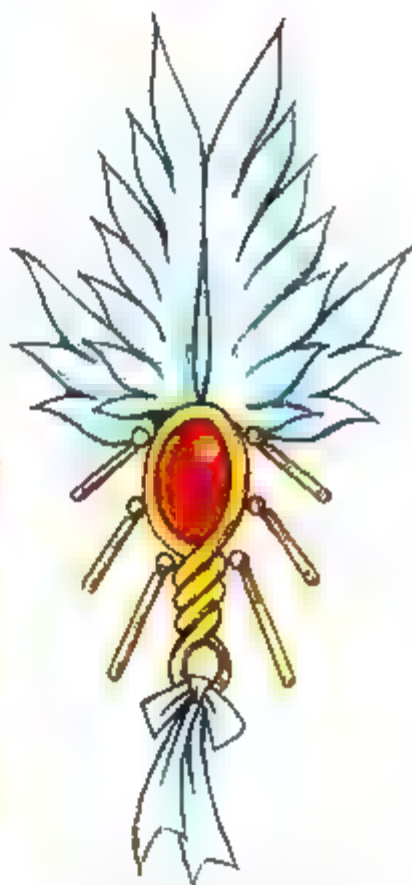
## Twig on the Plateau

Allows you to get  
back to your town



## Holly Leaves

These leaves, when used, ward off  
lower level enemies for a short time



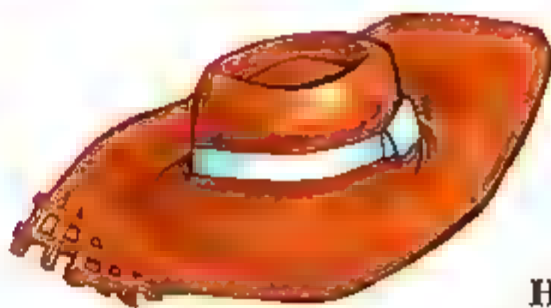
## Teleporter

It warps you to a town  
you have visited.

# SOME OF THE ITEMS ON YOUR WAY



**Ornament**  
Only women  
can wear this



**Hat**  
Not much defensive  
protection but better  
than nothing.

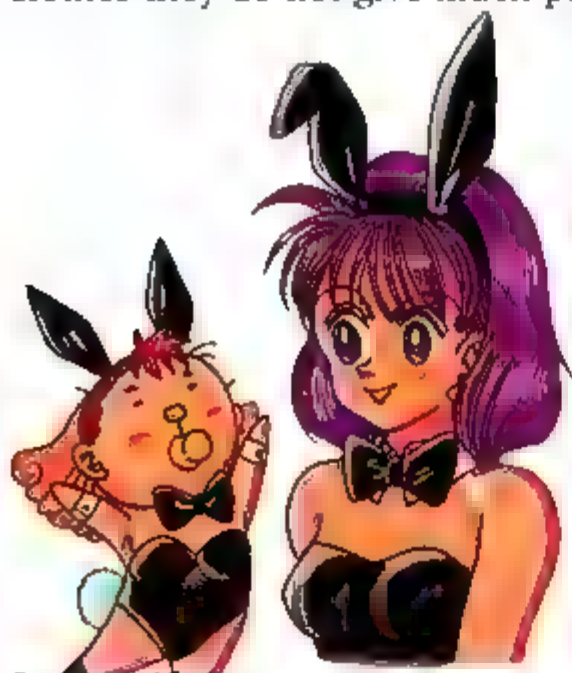


**Leather Clothes**  
Although everyone can wear these  
clothes they do not give much protection.



**Leather Shoes**  
Stronger than  
regular shoes

**Cloth Robe**  
Most everyone can  
garnish this robe.



**Bunny Shoes**  
Any man or woman wearing this suit will have the look  
of a cute "Bunny Girl". Kustera cannot equip it though.



# SOME OF THE ITEMS ON YOUR WAY



**Chain Mail**

Lighter than traditional armor, it increases defense well.



**Gloves**

For your hands



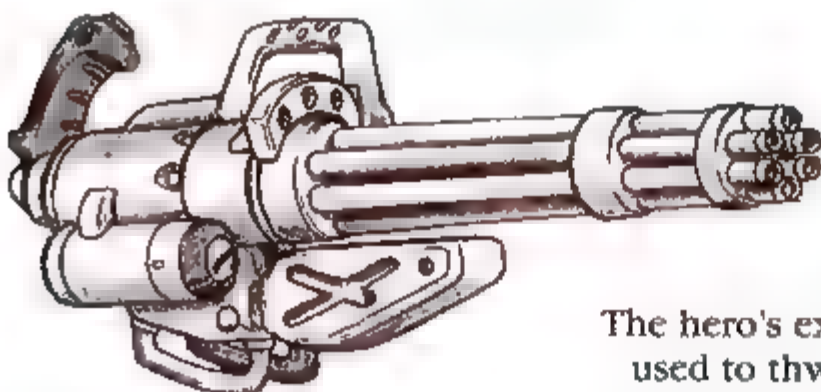
**Gas Mask**

For defense against poisonous gas attacks



**Wild Fang**

For your fist, it gives a power to fighters in battle



**Vulcan Gun**

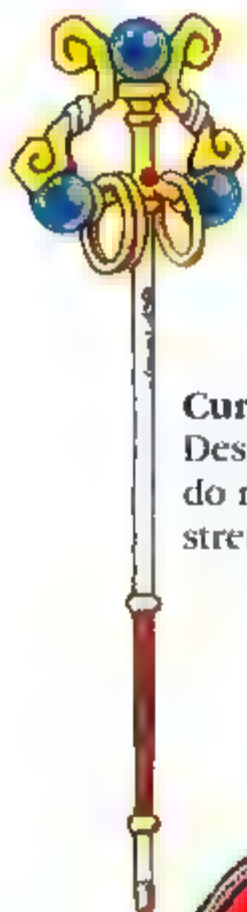
A rare modern weapon that can fire in rapid succession



**Riot Gun**

The hero's explosive gun used to thwart the riot. It's power is outstanding.

# SOME OF THE ITEMS ON YOUR WAY



**Cure Cane**  
Designed for ones who do not have great strength.



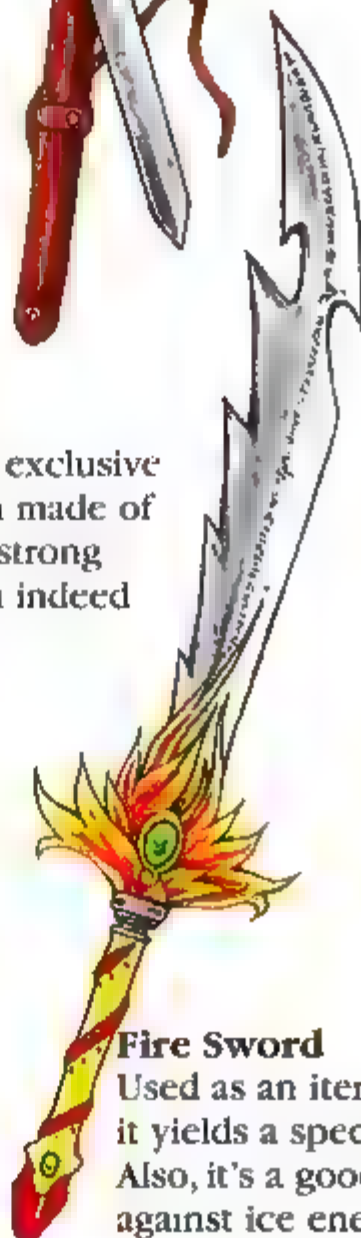
**Short Sword**  
Although it costs little, it is an effective weapon for beginning an adventure.



**Yo-Yo**  
Leona's exclusive weapon made of steel. A strong weapon indeed.



**Hammer**  
A steel forged weapon that only works well for those who can use it.



**Fire Sword**  
Used as an item in battle, it yields a special power. Also, it's a good weapon against ice enemies.



# ATTACK MAGIC

Name of Spell	LV	MP	Effect Object	Effect Shows
Mute	L1 L2 L3	3 5 7	One * All	To silence an enemy's magic L1 with higher possibility L1 with highest possibility
Powerless	L1 L2 L3	4 6 0	One One One Friend	Take enemy HP More effective than L1. Pass friend's HP to you
Spellless	L1 L2 L3	0 6 0	One One One Friend	Take enemy MP More effective than L1 Pass friend's MP to you
Evade	L1 L2 L3	4 5 6	One All One	Reduces enemy attack %. More effective than L1. Confuses enemy who tries to attack you.
Slow	L1 L2 L3	3 4 6	One One All	Reduces guard and speed of an enemy a little Same as L1, but more effective Reduces all of enemies guard and speed.
Fast	L1 L2 L3	2 4 6	Self One Friend All Friends	Increases guard and speed a little Increases guard and speed more than L1 Same as L2, but more
Power	L1 L2 L3	4 5 6	Self Self One Friend	Increases attack power a little More effective than L2. Increase your friend's attack power
Mirror	L1 L2 L3	4 5 6	Self Self All Friends	Reflect half of enemy magic Decreases damages of Fire, Gas, Ice and storm Bolt spells cast by the enemy
Repel		4	On Field	You can avoid enemy attack for a short time
Step		4	Snow and Magma Field	You can walk without damage on grounds that you are normally damaged by.

# ATTACK ASSIST MAGIC

Name of Spell	LV	MP	Effect Object	Effect Shows
Fire	L1	2	One Enemy	Attack with a small fire pillar
	L2	4	"	Major damage to the enemy with a fire pillar
	L3	10	"	Burn enemy with flame.
Freeze	L1	2	One Enemy	Attack with ice
	L2	7	All Enemies	Damage to the enemy using snow.
	L3	11	"	Freeze enemies with absolute zero degree temperature
Storm	L1	3	One Enemy	Attack with wind.
	L2	6	All Enemies	Damages enemy with Tornado.
	L3	9	"	Engulfs enemies in a vacuum.
Bolt	L1	4	One Enemy	Attack with lightning.
	L2	8	"	Same as L1 but more powerful
	L3	14	All Enemies	Drops extremely powerful lightning on enemies heads.
Bomb	L1	5	All Enemies	Explodes on enemies.
	L2	8	"	More powerful explosion than L1
	L3	15	"	Blow everything away.
Coma	L1	3	One Enemy	To make an enemy sleep.
	L2	4	"	To make an enemy sleep easier
	L3	6	All Enemies	To make enemies sleep soundly
Vanish	L1	4	One Enemy	You can destroy one enemy
	L2	6	"	Works more often than L1.
	L3	8	All Enemies	Destroy all of enemies.
Land	L1	8	All Friends	Every time you get different effects. Usually it helps your friends in a crisis situation
	L2	14	"	
	L3	20	Everyone	

\* Ninja Ryu is able to use Lightning and Punish up to Lv2

# RECOVERY REINCARNATE MAGIC

\*Ninja is able to use Healing up to Lv2 only

Name of Spell	LV	MP	Effect Object	Effect Shows
Healing	L1	3	One Friend	Regain few HP
	L2	5	"	Regain more HP
	L3	8	"	Regain full HP
Recovery	L1	10	All Friends	Recover all of friends' HP a little
	L2	18	"	Recover all of friends' HP more
	L3	36	"	Recover all of friends' HP to the max
Pffcure	L1	3	One Friend	Remove poison only
	L2	6	"	Remove poison and fever
	L3	8	"	Remove poison, fever, and mute.
Passcure	L1	3	One Friend	Remove stop only
	L2	6	"	Remove Stop and Sleep
	L3	8	"	Remove Stop, Sleep, and Confuse
Resurrect	L1	12	One Friend	If you are lucky, you'll become conscious (recover 1/4 HP).
	L2	16	"	L1 with higher possibility (recover 1/2 HP).
	L3	20	"	Become conscious for sure (HP fully recovered).

\* Main character is able to use Resurrect up to Lv 2

## \* Other Magic

Escape		8		Teleport from dungeon, town, etc. to the map field.
Flyby		8		Warp to places that you have already been
Seal		4	One Field	for 128 steps, you will avoid monsters.
Through		4	Snow and Magma Fld.	You can walk without damage on any field that normally causes damage

# COMBINED ATTACK MAGIC

Name of Spell	Element	LV	MP	Effect Object	Effect Shows
Fire Storm	Fire Storm	L1 L1	3	One Enemy	Maximum damage using fire and wind.
Ice Storm	Freeze Storm	L2 L1	7	All Enemies	Destroys enemies with absolute zero winds.
Ice Fire	Fire Freeze	L1 L1	2	One Enemy	Destroys enemy with fire and ice
Bolt Storm	Lightning Storm	L2 L2	14	All Enemies	To surround enemies in winds of lightning.
Cure All	Poffcure Pass Cure	L3 L3	8	One Friend	Cures all of conditions except Gold and Faint
Take	PowerLess Spell Less	L1 L1	4	One Enemy	Absorb HP and MP at same time from an enemy.
Call	Shield Through	L1 L1	4	All Enemies	Monsters cannot call for help.
State	Fire Freeze Storm Lightning	L3 L3 L3 L3	15	All Enemies	To wipe enemies out with Nuclear Power
Fire Blade	Fire Sword Fire	L1	2	One Enemy	Damage of sword with Fire Spell
Ice Slash	Freeze Sword Freeze	L1	2	One Enemy	Damage of sword with Ice Spell
Bolt Break	Ltng Sword Lightning	L1	4	One Enemy	Damage of sword with lightning.

# NOTES

---

---

---

---

---

---

---

---

---

---

---

---

---

---

---

---

---

---

---

---

---

---

---

---

# NOTES

---

---

---

---

---

---

---

---

---

---

---

---

---

---

---

---

---

---

---

---

---

---

---

---

---

---

---

# 90-DAY LIMITED WARRANTY TECMO GAME PAKS

## 90-DAY LIMITED WARRANTY:

Tecmo, Inc. ("TECMO") warrants to the original consumer that this Tecmo Game Pak ("PAK") shall be free from defects in material and workmanship for a period of 90 days from date of purchase. If a defect covered by this warranty occurs during the 90-day warranty period, Tecmo will repair or replace the PAK, at its option, free of charge.

To receive this warranty service:

1. DO NOT return your defective Game Pak to the retailer.
2. Notify the Tecmo Consumer Division of the problem requiring warranty service by calling: 1-310-787-2905  
Our Consumer Service Department is in operation from 8:00 A.M. to 5:00 P.M. Pacific Time, Monday through Friday.
3. If the Tecmo service technician is unable to solve the problem by phone, he will provide you with a Return Authorization number. Simply record this number on the outside packaging of your defective PAK, and return your PAK freight prepaid, at your risk of loss or damage, together with your sales slip or similar proof-of-purchase within the 90-day warranty period to:

**Tecmo, Inc. Consumer/Service Department:  
Sequoia Commerce Center  
19260 S. Van Ness Avenue  
Torrance, CA 90501**

This warranty shall not apply if the PAK had been damaged by negligence, accident, unreasonable use, modification, tampering, or by other causes unrelated to defective materials or workmanship.

## REPAIRS AFTER EXPIRATION OF WARRANTY:

If the PAK develops problems after the 90-day warranty period, you may contact the Tecmo Consumer Department of the phone number noted above. If the Tecmo service technician is unable to solve the problem by phone, he may provide you with a quote for the repair cost and a Return Authorization number. You may then record this number on the outside packaging of the defective PAK and return the defective PAK "freight prepaid" to Tecmo, enclosing a check or money order for the amount quoted payable to Tecmo, Inc. Tecmo will, at its option, subject to the conditions above repair the PAK or replace it with a new or repaired PAK. If replacement PAKS are not available, the defective PAK will be returned and your payment refunded.

## WARRANTY LIMITATIONS

ANY APPLICABLE IMPLIED WARRANTIES, INCLUDING WARRANTIES OF MERCHANTABILITY AND FITNESS FOR A PARTICULAR PURPOSE, ARE HEREBY LIMITED TO NINETY DAYS FROM THE DATE OF PURCHASE AND ARE SUBJECT TO THE CONDITIONS SET FORTH HEREIN. IN NO EVENT SHALL TECMO BE LIABLE FOR CONSEQUENTIAL OR INCIDENTAL DAMAGES RESULTING FROM THE BREACH OF ANY EXPRESS OR IMPLIED WARRANTIES.

The provisions of this warranty are valid in the United States only. Some states do not allow limitations on how long an implied warranty lasts or exclusion of consequential or incidental damages, so the above limitations and exclusion may not apply to you. This warranty gives you specific legal rights, and you may also have other rights which vary from state to state.



Tecmo, Inc. Consumer Division  
19260 South Van Ness Ave.,  
Torrance, CA 90501

PRINTED IN USA